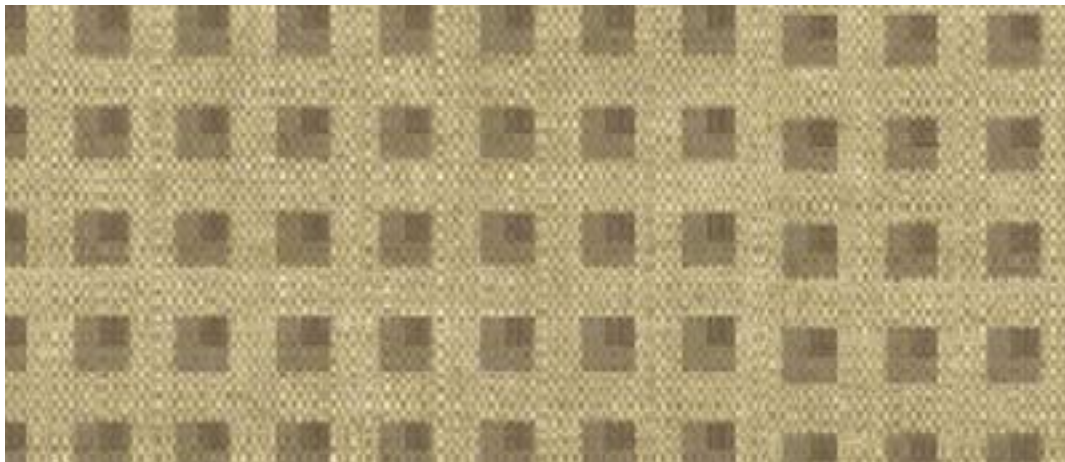


5008 Better than Tile™ Chromaveil™

Vertical Repeat: 0.00" Horizontal Repeat: 0.00"



Overview: Chromaveil™ is a non-woven synthetic fabric printed in a series of unique patterns. Chromaveil™ is designed to be used behind a high-quality clear gel coat and in in-mold composite fabrications. Additionally, Chromaveil™ should be backed with at least 2 layers of continuous strand mat to achieve a rich, opaque appearance

Chromaveil™ is very soft, pliable and can be used in extremely tight radii and corners without relief cuts or pleats. Chromaveil™ has excellent tensile strength and elongation properties and can withstand the rigors of most lay-ups without tearing, shredding or harming the pattern. The addition of resin does not significantly change the properties of Chromaveil™.

Application: For maximum reduction of air bubbles, it is best to wet out Chromaveil™ from the mold side and bring the excess resin through the fabric, expelling the air ahead of the resin. The surface should then be sprayed or brushed with resin and a light rolling motion used to ensure wet-out.

Heat may be applied to Chromaveil™ to increase pliability when preforming or pulling over a male mold. Always drape, shape-fit and cut Chromaveil™ before prewetting a mold with complex hat-shaped or globe-type curves.

Repeats: Chromaveil™ is printed edge to edge and each pattern has a unique set of repeats. As a general rule, achieving a butt joint will be more difficult with a pattern having a larger vertical and/or horizontal repeat. The repeat for this pattern is identified at the top of this sheet. This could be the amount of waste in either direction when attempting to match patterns exactly.

Precutting and prematching Chromaveil™ is recommended before beginning any lay-up requiring a butt joint.

Characteristics:

- 100% high melt polyester veil printed in a variety of patterns
- Superior chemical and corrosion resistance
- High tensile strength
- 48" wide, printed edge to edge
- Fast wet out
- Excellent conformability to complex shapes

Basis Weight (ASTM D3776)	.9 - 1.3 oz/sq yd 31 - 44 g/sq m
Caliper (ASTM D1777)	7 - 12 mil 0.18 - 0.31 mm
Grab Tensile MD (ASTM D5034) XD	22 - 24 lb 10 - 10.9 kg 11 - 14 lb 5.0 - 6.4 kg
Elongation @ Break MD (ASTM D5034) XD	33% - 50% 75% - 119%
Modulus @ 10% Elongation MD (ASTM D885M VAR.)	6 - 9 lb 2.7 - 4.1 kg
Fiber Elongation @ Break	25%
Fiber Softening Point	460°F 235°C
Fiber Melting Point	483°F 250°C
U.V. Resistance Comment	Excellent