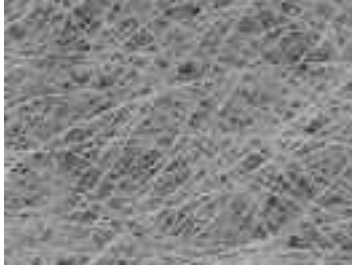


251 Fiberglass Continuous Strand Mat



Overview: Continuous Filament Mats are continuous fiber, non-woven mats containing either a soluble or insoluble binder for unsaturated polyester (UP) or polyurethane (PU) compatibility in unfilled or filled resin systems.

They are particularly suitable for compression molded electrical and non-electrical laminates, and for use in the pultrusion process. Pultruded shapes made with Continuous Filament Mats have outstanding transverse and random-direction strength.

Continuous strand mats are frequently used when rapid build-up and high conformability is required. When used for vacuum infusion, continuous strands will facilitate resin flow without the slowing effect frequently caused by chopped strand binders. 1.5 oz.

Available in 1, 3, and 5 yard packages, custom cuts starting at 10 yards, and full rolls.

General Properties for Chopped Strand Mat:

- Quick wetting and rapid air release, which allows for maximum molding productivity and reduced cost.
- Excellent weight uniformity allows consistent customer part quality
- Fine strand and superior chemistry minimizes print-through, resulting in attractive surface finishes with excellent laminate clarity.
- Superb dry mat integrity enhances productivity and reduces material losses during unrolling, cutting and piece handling.
- Small diameter, very dense rolls are safer and allow for more efficient material handling

Specific Product Properties:

Weave Pattern	Mat
Weight	1.5 oz/ft ²
Thickness	0.060 inches
Roll Width	50 inches
Roll Length	125 yards

Resin Compatibility:

Part Number	Polyester Resin	Vinyl Ester Resin	System 2000 Epoxy
248	x	x	
250	x	x	
251	x	x	
260	x	x	
492	x	x	

An "X" means the fabric is compatible with the resin.

The compatibility is based on Fibre Glast Developments resin's only.