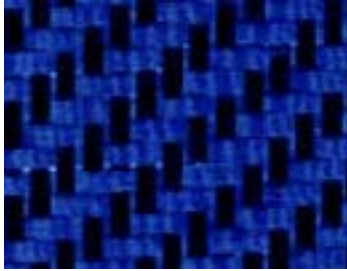


1066 Blue Kevlar®/Carbon Hybrid



Overview: These are reinforcing fabrics that combine two or more different types of fiber. One common hybrid is a mixture of Kevlar and carbon fiber. The Kevlar provides high impact resistance, while the carbon fiber supplies the stiffness.

Use this fabric as a single layer for cosmetics only or back with another layer in the cross direction for a maximum balance of properties.

These first quality, hybrid fabrics offer 3K Carbon in the warp and 1500 Denier Kevlar in the fill directions for maximum drapability and drop-dead good looks. The Kevlar fibers are dyed with the red, blue, or yellow dyes for eye-catching color.

Available in 1, 3, and 5 yard packages, custom cuts starting at 10 yards, and full rolls.

General Properties for Kevlar®/Carbon Hybrid:

- Lightweight
- High Strength
- Fire Resistant
- Dimensionally Stable
- Fatigue Resistant
- Highly Drapable

Specific Product Properties:

Weave Pattern	2 x 2 Twill
Yarn Description	Warp: 3K Multifilament Continuous Tow
	Fill: 1500 Denier Kevlar®
Count (ends x picks) inches	12 x 14
Weight	5.75 oz/yard ²
Thickness	0.012 inches
Roll Width	50 inches
Roll Length	100 yards

Weave Pattern Rankings:

	Thickness	Weight	Strength	Porosity
Plain	3	1	3	1
Twill	2	1	4	2
4-Harness Satin	3	1	4	2
8-Harness Satin	1	1	7	4
Leno	7	7	1	7
Mock Leno	6	1	2	4

This was a scale from 1 to 7, with 1 being the lowest and 7 being the highest

Resin Compatibility:

Part Number	Polyester Resin	Vinyl Ester Resin	System 2000 Epoxy
217	x	x	x
218	x	x	x
219	x	x	x
220	x	x	x
221	x	x	x
222	x	x	x
223	x	x	x
224	x	x	x
241	x	x	x
243	x	x	x
244	x	x	x
245	x	x	x
247	x	x	x
254	x	x	x
259	x	x	x
262	x	x	x
271	x	x	x
480			x
481			x
482			x
1065			x
1066			x
1067			x

An "X" means the fabric is compatible with the resin.
The compatibility is based on Fibre Glast Development's resins only.