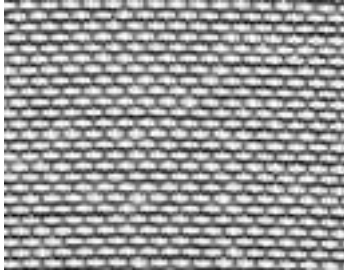


259 6oz. Fiberglass Fabric



Overview: Woven fabrics are strong reinforcements because the fibers are bundled into yarns oriented in just two directions. The warp and fill yarns run at 0 and 90 degrees respectively. Thus, fabrics are anisotropic, or strong in only two directions.

Fabrics need to be oriented so the fiber yarns run parallel to the expected loads. If extra strength is needed in a different direction, another ply must be added at an angle to the first. The most common angles are +/- 45 degrees.

2-3 Layers of this fabric is a popular lightweight molding schedule and repair sequence. A single layer also provides more protection to strip built canoes, and is still quite clear.

Available in 1, 3, and 5 yard packages, custom cuts starting at 10 yards, and full rolls.

General Properties for Woven Fabrics:

High Tensile Strength	Glass is one of the strongest textile fibers, having greater specific tensile strength than steel wire of the same diameter, at a lower weight
Dimensional Stability	Low elongation under load, generally 3% or less. Glass fibers produce fabrics with excellent dimensional stability under various types of conditions.
High Heat Resistance	Glass fabrics have excellent dimensional stability under various types of conditions.
Fire Resistance	Composed of inorganic materials, glass fabrics are noncombustible, a natural choice where flammability is a concern.
Chemical Resistance	Like glass itself, fiberglass fabrics are highly resistant to attack by most chemicals.
Durability	Being inert, glass fabrics are unaffected by sunlight, fungus, or bacteria.
Economical	Glass fabrics are lower in cost than many other fabrics for smaller applications.

Specific Product Properties:

Style	3733
Finish	627
Weave Pattern	Plain
Yarn Description	Warp: ECG 37 1/0
	Fill: ECDE 37 1/0
Count (ends x picks) inches	18 x 18
Weight	5.75 oz/yard ²
Breaking Strength (lb/in)	Warp: 150
	Fill: 115
Thickness	0.0082 inches
Width	38 yards
Roll Length	125 yards

Weave Pattern Rankings:

	Thickness	Weight	Strength	Porosity
Plain	3	1	3	1
Twill	2	1	4	2
4-Harness Satin	3	1	4	2
8-Harness Satin	1	1	7	4
Leno	7	7	1	7
Mock Leno	6	1	2	4

This was a scale from 1 to 7, with 1 being the lowest and 7 being the highest

Resin Compatibility:

Part Number	Polyester Resin	Vinyl Ester Resin	System 2000 Epoxy
217	x	x	x
218	x	x	x
219	x	x	x
220	x	x	x
221	x	x	x
222	x	x	x
223	x	x	x
224	x	x	x
241	x	x	x
243	x	x	x
244	x	x	x
245	x	x	x
247	x	x	x
254	x	x	x
259	x	x	x
262	x	x	x
271	x	x	x

An "X" means the fabric is compatible with the resin.
The compatibility is based on Fibre Glast Development's resins only.